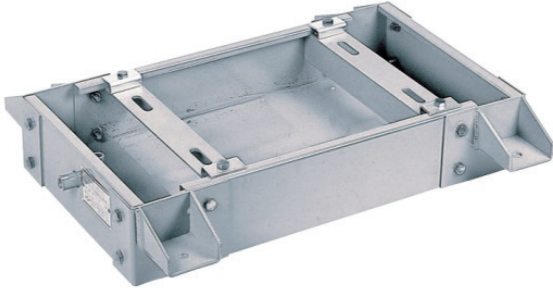


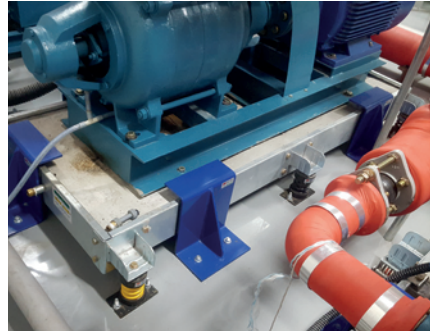
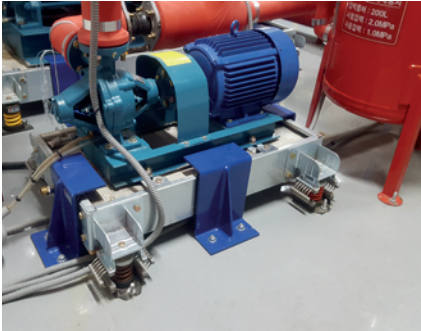
SIB-SB

Seismic Inertia Base



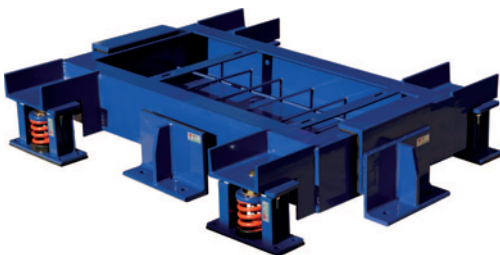
● Features

The inertia base is designed to block vibration that happens when running a pump and to minimize dynamic displacement by dynamic force that happens at the time of rapid load change such as on/off using concrete load. The inertia base consists of a base in the shape of a C-channel or \sqsubset -channel, a support fixture (\sqsupset angle) to which a pump and motor can be easily assembled, a bracket to attach a mount and a bottom plate for reinforcement. The height (H) of the inertia bracket is designed to be at least 150 mm and varies depending on the horsepower of the motor.



SB-SERIES

Seismic Base



● Features

The structure base is a support fixture made of a \sqsubset -channel, support fixture to which equipment can be easily assembled, and a bracket to attach a mount. The height (H) of the structure base is designed to be at least 150 mm and varies depending on the capacity of equipment.

